

WinSCP (for Windows)

Saturday, February 24, 2018 2:48 PM

WinSCP is an open source free [SFTP client](#), [FTP client](#), [WebDAV](#) client, [S3](#) client and [SCP](#) client for Windows. Its main function is file transfer between a local and a remote computer. Beyond this, WinSCP offers scripting and basic file manager functionality.

This is a very robust product and the following information is intended as a summary introduction. For more detailed information, go to the home website at www.winscp.net. If you use the program as much as I do, consider leaving a donation and giving them an excellent review.

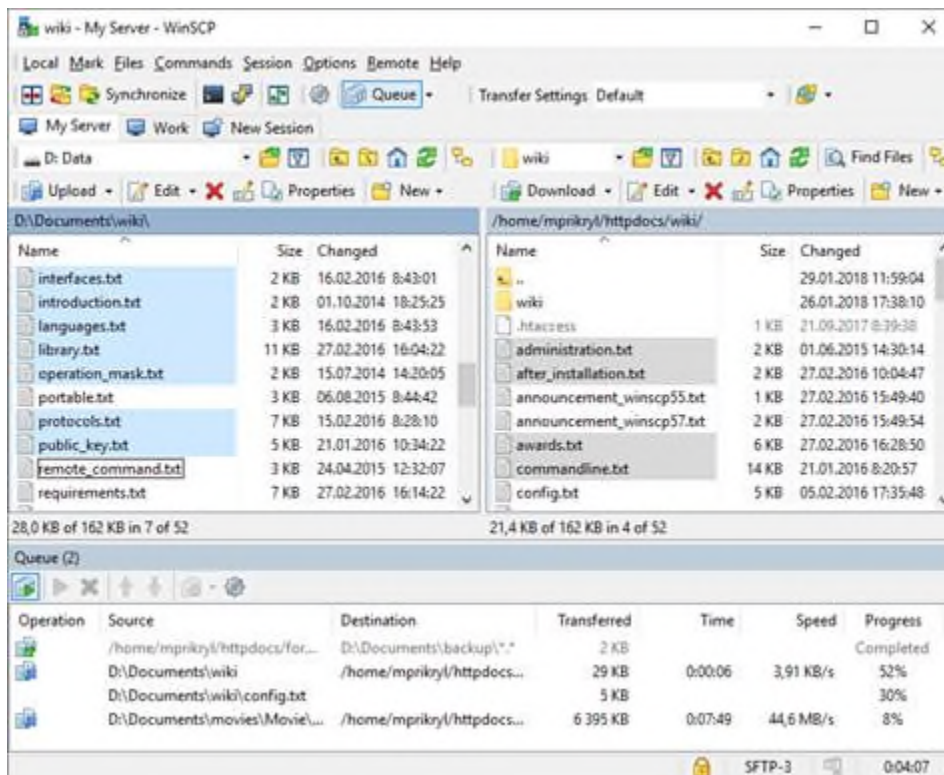
Basic installation is quite easy and involves just downloading a Windows install file and executing it.

Features

- [Graphical user interface \(screenshots\)](#)
- [Translated into many languages](#)
- [Integration](#) with Windows (drag&drop, [URL](#), shortcut icons, [jump list](#))
- All common [operations with files](#)
- Support for [SFTP and SCP protocols](#) over SSH and [FTP](#) and [WebDAV](#) and [S3](#) protocols
- Batch file [scripting and command-line interface](#) and [.NET assembly](#) for advanced programming tasks
- [Directory synchronization](#) in several semi or fully automatic ways
- [Integrated text editor](#)
- [Shares site settings with PuTTY](#)
- Support for password, keyboard-interactive, public key and Kerberos (GSS) [authentication](#)
- Integrates with [Pageant](#) (PuTTY authentication agent) for full support of [public key authentication](#) with SSH
- [Explorer](#) and [Commander interfaces](#)
- Optionally protects [stored site information](#) with [master password](#)
- Optionally supports portable operation using a [configuration file in place of registry entries](#), suitable for operation from removable media

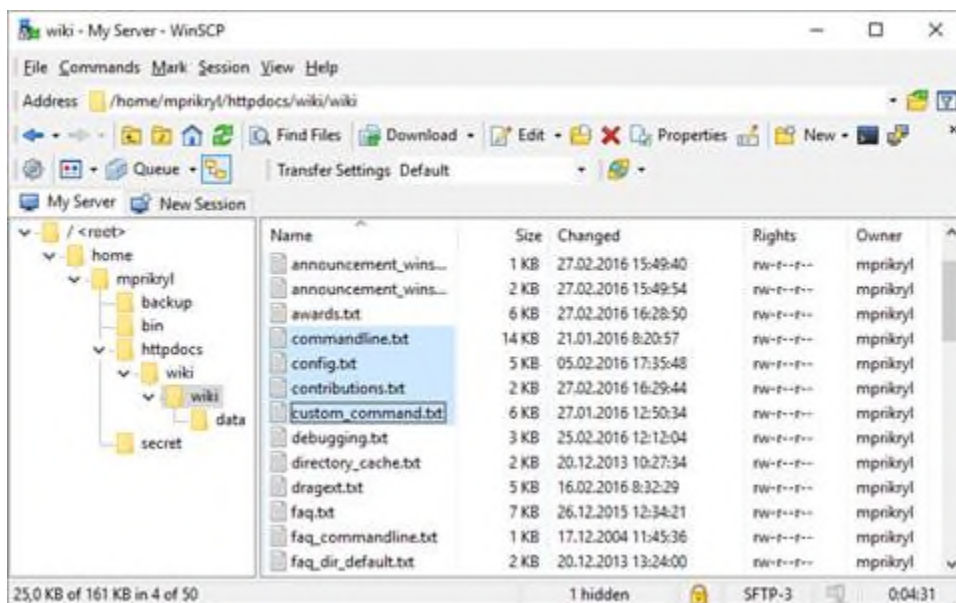
Commander Interface

The [first interface](#) is based on Norton Commander and similar file managers. The interface displays a local folder in the left panel and a remote folder in the right panel. Most of the time, you'll transfer files between these folders, though you can also transfer files to a different folder. This user interface type is also known as [Orthodox File Manager](#).



Explorer Interface

The [second interface](#) is similar to Windows Explorer, and you only see the remote folder. To transfer files, enter the target local directory's location or drag and drop. Both interfaces offer the same transfer methods.



Using Portable Executable

WinSCP can be [downloaded](#) in the form of standalone Portable executables. The [executables](#) in the Portable executables package are identical to the executables in an Installation package. The difference is that the [installer](#) pre-configures the executables to override their default portable behavior.

Portable executables are intended for advanced users and specific needs. For general use, use [installer](#). On startup the Portable executable looks for an [INI file](#) in the directory from which it was started. The INI file must have an .ini extension and the same name as the executable. If the executable does not find any, it creates one with a default configuration. This allows you to easily carry WinSCP with your [configuration](#) on a removable media or an USB drive. For details, see [auto-selecting configuration storage](#).

You may also use an INI file in a different folder or with a different name using an [/ini switch](#).

Full Portability

With default [configuration](#) WinSCP still stores some temporary data on the file system of the host computer. You can configure WinSCP to be completely portable though. I.e. make it store all its files and configuration in one place - a portable drive (such as USB drive).

WinSCP stores by default these files to the host computer:

- [Random seed file](#) (file winscp.rnd in C:\Users\username folder);
- [Temporary files](#) (system temporary folder).

You can force WinSCP to store the files into different locations in [preferences](#). You can use [local paths](#) relative to the WinSCP start folder.

To change the storage directly in an INI file to the same location, where WinSCP is started from, set following parameters:

```
[Configuration\Interface]
RandomSeedFile=.\winscp.rnd
DDTemporaryDirectory=.\
```